

PARENT PAYMENT POLICY AND IMPLEMENTATION

Blackburn Primary School

PURPOSE

To ensure that parent payment practices are consistent, transparent and ensure that all children have access to the standard curriculum.

RATIONALE

The Victorian community shares a vision to build an education system that champions excellence and ensures that every child and young person has access to the opportunities to succeed in life, regardless of their background or circumstances.

Schools are best placed to make local decisions which ensure that all students can access a broad range of learning opportunities that support their expectations and promote their aspirations as they move through the education system. Parent contribution, in all forms, assists schools to provide an enriched learning and teaching program for every student and is highly valued by school communities.

Learning and teaching programs vary across schools based on local needs and circumstances and reflect each school's priorities, decisions and resources. This, in turn, informs the parent payment charges approved by school councils that may vary from one school to the next.

WHAT CAN SCHOOLS CHARGE FOR?

The Education and Training Reform Act 2006 provides for instruction in the standard curriculum program to be free to all students in government schools. School councils are responsible for developing and approving school-level parent payment charges and can request payments from parents¹ under three categories only- Essential Student Learning Items, Optional Items and Voluntary Financial Contributions.

Essential Student Learning Items are those items, activities or services that are essential to support student learning of the standard curriculum. These are items that the school considers essential for all students and which students take possession of. Parents may choose to provide the items themselves or buy the items from the school where practical and appropriate.

Optional Items are those items, activities or services that are offered in addition to or support instruction in the standard curriculum program. These are provided on a user-pays basis so that if parents choose to access them for students, they are required to pay for them.

Voluntary Financial Contributions

¹ Parent' in the policy has the same meaning as in the *Education and Training Reform Act 2006*, which is: 'parent', in relation to a child, includes a guardian and every person who has parental responsibility for the child including parental responsibility under the *Family Law Act 1975* of the Commonwealth and any person with whom a child normally or regularly resides.

Parents can be invited to make a donation to the school for a general or specific purpose, e.g. school grounds projects, library fund or for new equipment. Only some Voluntary Financial Contributions are tax-deductible.

The attached diagram "**Understanding Parent Payment Categories**" provides examples of items and materials under each category.

In implementing this policy, schools must adhere to the following principles:

PRINCIPLES

- **Educational value:** Student learning, aspirations and wellbeing are paramount when schools determine their parent payments practices
- **Access, equity and inclusion:** All students have access to the standard curriculum program and participation of all students to the full school program is facilitated
- **Affordability:** Cost to parents is kept to a minimum and is affordable for most families at the school
- **Engagement and Support:** Early identification and engagement strategies by the school ensure parents are well informed of the payment options and supports available for those experiencing hardship
- **Respect and Confidentiality:** Parents and students experiencing hardship are treated with respect, dignity, sensitivity and without judgement and the identity and personal information of all parents and students are kept confidential in respect to parent payments
- **Transparency and Accountability:** School parent payment practices are well communicated, clear and transparent and their impact on student programs and families are reviewed by school councils

COST AND SUPPORT TO PARENTS

When school councils consider the proposed requests for parent payments the cost is kept to a minimum and is affordable to most parents at the school.

School principals must ensure that:

- items students consume or take possession of are accurately costed
- payment requests are broadly itemised within the appropriate category
- parents are advised that they have the option of purchasing equivalent Essential Student Learning Items themselves, in consultation with the school
- information on payment options is available, accessible and easily understood to all parents so that they know what to expect and what supports they can access
- parents are provided with early notice of annual payment requests for school fees (i.e. a minimum of six weeks' notice prior to the end of the previous school year). This enables parents to save and budget accordingly.
- parents are provided with reasonable notice of any other payment requests that arise during the school year- ensuring parents have a clear understanding of the full financial contribution being sought
- the status and details of any financial arrangements are kept confidential and only shared with relevant school personnel
- parents experiencing hardship are not pursued for outstanding school fees from one year to the next
- use of debt collectors to obtain outstanding school funds owed to the school from parents is not permitted

- there will be only one reminder notice to parents for voluntary financial contributions per year
- Invoices/statements for unpaid essential or optional items accepted by parents are not generated more than monthly or according to the parent payment arrangement with the school.

SUPPORT FOR FAMILIES

Families may experience financial difficulties and may be unable to meet the full or part payments requested. Principals and school councils exercise sensitivity to the differing financial circumstances of students and their families when considering parent payment fees. There are a range of support options available to support and assist parents. These can be accessed through [“Cost support for families.”](#)

Consideration to hardship arrangements in respect to payment requests is provided to families experiencing long term hardship or short term crisis on a confidential, case by case basis. All schools have written hardship arrangements that include a proactive approach to providing support for parents experiencing financial difficulty.

All parents are provided the name and contact details of a nominated parent payment contact person at the school who they can discuss payment arrangements with.

ENGAGING WITH PARENTS

In respect to each school’s development of its parent payments, school councils will engage in effective communication with the school community and have strategies in place to ensure they are aware of and understand the needs and views of parents.

REVIEW OF POLICY IMPLEMENTATION

Schools will monitor the effectiveness and impact of the implementation of this policy at least annually as part of its ongoing improvement and report back to the school community.

The full Parent Payment Policy is available from the Department’s [School Policy and Advisory Guide](#).

Answers to the most commonly asked questions about school costs for parents see: [Frequently Asked Questions – For Parents](#)

Understanding Parent Payment Categories

Schools

What does the legislation say?

The Education and Training Reform Act (2006) provides for free instruction in the standard curriculum program to all students in government schools. The Act also empowers school councils to charge fees to parents for goods and services provided by the school to a child.

In the Act, a 'Parent' includes a guardian and every person who has parental responsibility for a child including parental responsibility under the Commonwealth Family Law Act 1975 and any person with whom a child normally or regularly resides.

What do schools pay for as part of 'free instruction'?



Free instruction is the teaching staff, administration and the provision of facilities in connection with the instruction of the standard curriculum program, including reasonable adjustments for students with disabilities.

The standard curriculum for Years F-10 means implementation of the Victorian Curriculum F-10.

The standard curriculum for senior secondary schools means a program that enables a student to be awarded a VCE or VCAL qualification.

What principles govern parent payment practice?

Educational Value | Access, Equity & Inclusion | Affordability
Engagement & Support | Respect & Confidentiality | Transparency & Accountability

Parents

What may parents be asked to pay for?

Schools can request payment for Essential Student Learning Items



These are items, activities or services that the school deems **essential** to student learning of the standard curriculum.

Where practical and appropriate, parents may choose to purchase items through the school or provide their own.

These may also be either:

Items the student takes temporary or permanent possession of

- e.g.
- textbooks, activity books, exercise books
 - stationery, book bags
 - student ID cards, locks
 - cooking ingredients students will consume
 - materials for final products that students take home (technology projects, build-your-own kits, dioramas)
 - Picture Exchange Communication Systems

Activities associated with instruction that all students are expected to attend

i.e. travel, entry fees or accommodation

- e.g.
- excursions
 - incursions
 - school sports
 - work placements



Parents can be asked to pay for items, activities and services in the three Parent Payment Categories:

Essential Student Learning Items,
Optional Items and
Voluntary Financial Contributions.

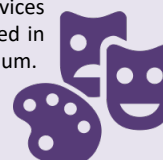
Schools determine how items, activities and services are classified within these categories based on the learning and teaching program of their school.

Schools can request payment for Optional Items

These are items, activities or services that are **optional** and are offered in addition to the standard curriculum.

Students may access these on a user-pays basis.

These may be either:



Items the student purchases or hires

- e.g.
- school magazines, class photos
 - functions, formals, graduation dinners
 - materials for extra curricular programs
 - student accident insurance

Activities the student purchases

- e.g.
- fees for extra curricular programs or activities, such as instrumental music tuition
 - fees for guest speakers
 - camps, excursions, incursions, sports
 - entry fees for school run performances

Items and/or materials that are more expensive than required to meet the standard curriculum

- e.g.
- use of silver in metal work instead of copper
 - supplementary exam revision guides

Support for families experiencing hardship is available at every school and each school has a parent payment contact person. See your school's policy for more information.

For more information on Parent Payments and Personal Devices, visit the DET website at: www.education.vic.gov.au

Schools can invite
**Voluntary
Financial
Contributions**
for



- e.g.
- Building or Library fund (Tax deductible)
 - Voluntary contributions for a specific purpose, such as equipment, materials, services.
 - General voluntary contributions

Blackburn Primary School

Parent Payment Policy

PARENT PAYMENT CHARGES

The Parent Contributions are made up of essential, optional and voluntary (some tax deductible) components, as outlined below and we are fortunate that our school community values the high standard of resourcing supported by payment of these contributions. The School Council greatly appreciates all of your contributions so that we can continue to provide outstanding facilities and resources for our students.

- 1) **Essential Educational Items: (Student Requisites):** which parents pay the school to provide, and includes items like bulk stationery, workbooks, art and craft materials and consumable supplies for all classrooms and specialist lessons. Each student is asked to bring a box of tissues to their class and an art smock.

Essential Educational Items (Curriculum Requisites): which parents pay the school to provide additional curriculum resources (eg: apps/software programs, program licences, curriculum packages, etc)

- 2) **Optional Educational Items:** which are offered on a user-pays basis and which parents may choose whether or not their child participates. (eg: Excursions/Incursions, etc.)
- 3) **1 to 1 iPad Program:** The iPad program is a very important part of our curriculum and learning, providing an opportunity for students to engage in 21st Century digital technologies to enhance and complement learning programs. A minimum of 50% of payment must be completed by Monday 4 February 2019 for your child to receive their iPad. Payment plan options are available through Compass Course Confirmation/Payment.

The Technology levy is for **Foundation Classes only**, and contributes to the cost of using technology in the classroom. This levy includes application licenses, JAMF management systems, technical support and associated costs.

- 4) **Voluntary Financial Contributions:** We are fortunate that our school community values high standards of resourcing supported by these valuable contributions. Parents are invited to donate to the school with these voluntary contributions allowing us to keep the building and grounds in excellent condition. ***These programs rely heavily on parent donations, so we ask for your support.***

PAYMENT ARRANGEMENTS AND METHODS

Our preferred method of payment is via Compass. Installment payments are available for some items via Compass. Other payment methods are available in person at the General Office.

FAMILY SUPPORT OPTIONS

CAMPS SPORTS AND EXCURSION FUNDING (CSEF)

If you have a current Healthcare Card or a Centrelink Pensioner Concession Card, you may be eligible to apply for CSEF. We encourage you to apply ASAP using the forms previously supplied, or you can collect a form from the General Office. CSEF funding (\$125 per student per year) can be used to help pay for Camps, Sport or Excursions throughout the year. Please note that this funding cannot be used for School

Contributions. Further information is available on the DET website:
<http://www.education.vic.gov.au/about/programs/health/Pages/csef.aspx>

Contact the office for details on Second hand items which may become available throughout the year. News feeds will be on compass to notify of Second hand stalls.

For details of extra support for Families, please refer to the link under Support for Families on page 3 of this document.

CONSIDERATION OF HARDSHIP

BPS understands that at times families may experience financial difficulty or hardship and may find requests for payment stressful. Families are encouraged to contact Jackie Kapoor, Business Manager in the school office, on 9878 1483 jaclyn.kapoor@education.vic.gov.au or Andrew Cock, Principal on 9878 1483, for a confidential discussion and plan of support.

COMMUNICATION WITH FAMILIES

BPS Parent Payment Policy will be available on Compass/School Documentation.

General enquiries regarding any payment requests can be made to the office in person or by phoning 9878 1483.

All of our friendly staff in the office are able to assist with general enquiries. Concerns should be directed to Jackie Kapoor, Business Manager on 9878 1483 or Jaclyn.kapoor@education.vic.gov.au who will be happy to discuss or answer any queries regarding the Parent Contributions.

MONITORING AND REVIEW OF THE IMPLEMENTATION OF THE POLICY

BPS School Council approves, monitors and reviews annually the Parent Payment Policy to ensure:

- Educational value
- Access, equity and inclusion
- Affordability
- Engagement and support
- Respect and confidentiality
- Transparency and accountability.

In the review process School Council will identify any factors to be taken into account, including any concerns raised by the school community and the school will notify any changes to the Parent Payment Policy annually via Compass.

Date of approval by School Council: 29th March 2021